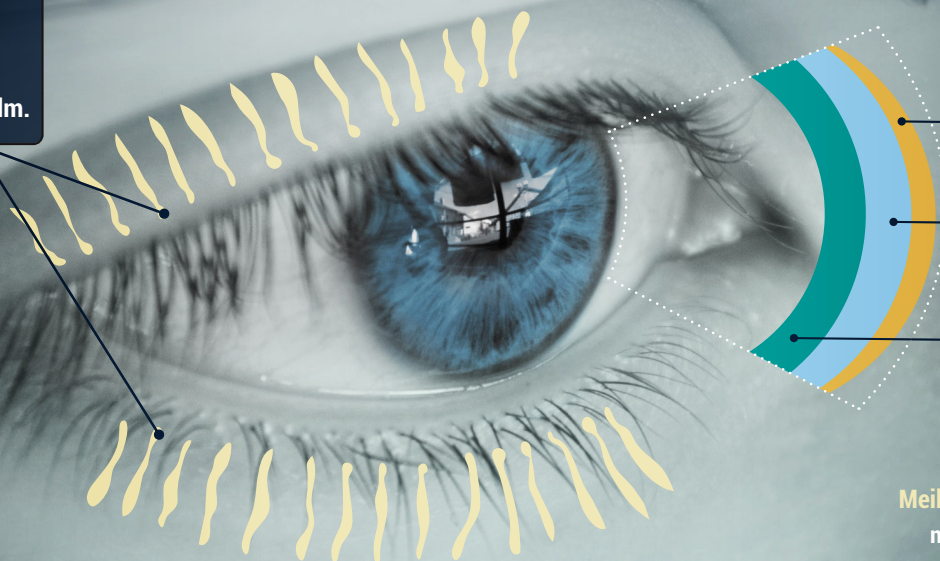


I-DROP®

VISCOADAPTIVE ARTIFICIAL TEARS
THE **BEST CHOICE** FOR YOUR PATIENTS

THE LIPID LAYER OF THE TEAR FILM IS KEY TO A HEALTHY OCULAR SURFACE

The Meibomian Glands produce meibum, an oily substance that prevents evaporation of the tear film.



Lipid Layer

Prevents tear film evaporation

Aqueous Layer

Contains water and nutrients to nourish and protect the cornea

Mucin Layer

Adheres tears to the eye

Meibomian Gland Dysfunction is the major cause of evaporative dry eye.

When tears evaporate too quickly, the tear film becomes unstable and symptoms of dry eye can occur.

86% OF DRY EYE PATIENTS HAVE AN INSUFFICIENT LIPID LAYER

THE BENEFITS OF USING I-DROP® VISCOADAPTIVE ARTIFICIAL TEARS

- ✓ Enhances all 3 natural layers of the tear film
- ✓ Highly effective at hydrating & lubricating the cornea
- ✓ Reduces tear film evaporation
- ✓ Offers immediate comfort & long-lasting relief
- ✓ Preservative-Free



Enhanced Relief for **Severe** Chronic Evaporative Dry Eye

Superior Relief for **Moderate to Severe** Chronic Dry Eye

Advanced Relief for **Mild to Moderate** Chronic Dry Eye

SEE THE DIFFERENCE

www.imedpharma.com

©2025 I-MED Pharma Inc. | #IDRTFSSE0225

What is I-DROP®?

I-DROP® is a premium, viscoadaptive, preservative-free artificial tear that is highly effective at hydrating and lubricating the cornea. I-DROP® is formulated with a top-quality hyaluronic acid component that contains a glycerin lubricant, which promotes excellent coating and recoating of the surface of the eye with every blink.

Our sophisticated one-way valve and air return system dispenses 1 sterile-dosed drop at a time (no wasted product) and eliminates any chance of the product re-entering the bottle. When the drop is dispersed, there is a distinctive blue tip which facilitates “aiming” by the patient.



How To Use I-DROP®?

- Ensure hands are clean prior to use
- Open safety seal
- Turn bottle upside down
- Position central blue dot of bottle above desired application area
- Carefully pull down lower eye lid
- Gently squeeze bottle until a single drop forms and falls (this may take a few seconds)
- Repeat on second eye
- Flick off any residual liquid
- Close cap tightly

Why Does Some Liquid Remain on The Bottle Tip?

After use, there may be a residual amount of liquid remaining on the tip of the bottle. This confirms that the bottle is working as it was designed, and not drawing this liquid back into the bottle.

This step is critical in keeping the remaining solution sterile and safe. Even a minuscule amount of fluid, exposed to a non-sterile external environment, may become contaminated. If any residual solution remains on the bottle after use, simply flick it off with a brisk motion and close the cap properly.

How Long Can I-DROP® Be Used Once The Bottle Has Been Opened?

I-DROP® can be used for up to 12 months after the bottle has been opened.

